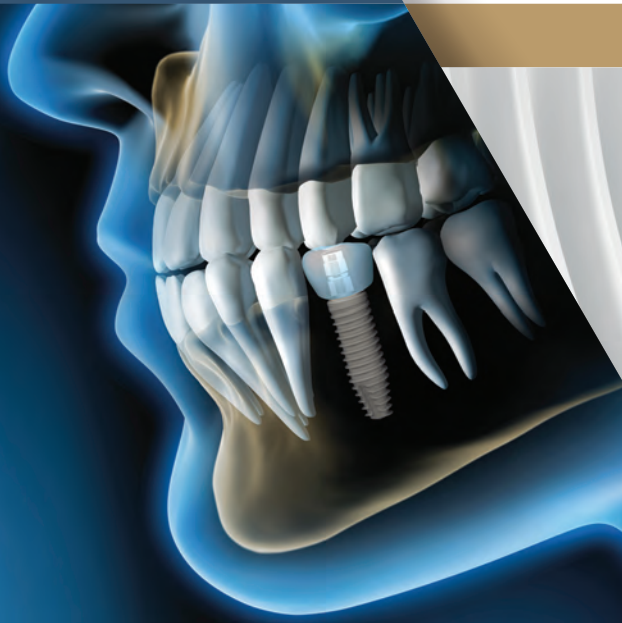


matrix™

Implant line



prosthetic components  
for implants with InthEx™  
connection and mini implants

**We have been designing and developing new solutions, striving towards making each phase of dentistry and prosthetics processes a little simpler and reproducible.** The most valuable asset of our company is human being, the set of people who daily act, operate and work together, sharing the same objectives and the same satisfaction and pride in offering our clients a high quality service.

Our primary objective is to **DISPENSE KNOWLEDGE.** We are strong of over 30 years of Know-how developed in the sectors in which we operate, through clear, rapid and efficient communication. **Guaranteeing** to our clients a top quality service to win their confidence and keep it in the long term, allowing them to obtain the maximum professional advantage and therefore economic advantage. **WE VALUE YOUR SKILLS**

since  
1987



# index

<b>_BioService</b>	<b>p. 4 - 5</b>
<b>_Components for implants InthEx™ connection</b>	<b>p. 6 - 23</b>
Healing caps and components	p. 8
Parallelism control abutments	p. 8
Transfer for impression	p. 9
Cemented prostheses	p. 10-11
For screw-retained prostheses for single elements	p. 12
For screw-retained prostheses for multiple elements	p. 13-15
Removable prostheses	p. 16
MES	p. 17
For syncrystallized/welded prostheses	p. 18-19
Prosthetic screws	p. 20
Components for digital dentistry	p. 21-23
<b>_Components for type “S” short implants</b>	<b>p. 24-27</b>
<b>_Components for MINI implants</b>	<b>p. 28-29</b>



### **CREDIBILITY**

We personally meet our clients face to face daily, to earn their trust, esteem and respect.



### **RELIABILITY**

Through consistency we put what we declare into action.



### **TRASPARENCY**

Due to conduct and procedures known and shared by all, as well as constant and comprehensive communication, we supply objective and verifiable information to allow our clients and users to choose in a free and independent way.

**FREEDOM OF CHOICE**





## PROVIDING

“Clever tools” so that the operator is able to act with efficiency, speed and without constraints on the quality of the product or service.



## SERVICE

Focused on disclosing the procedures of use of the various products and sharing strategies aimed at involving the final user (patient).



## ILLUSTRATING

The most suitable techniques in order to make the various working phases simpler and more ergonomic.



## OFFERING

Detailed merchandise information relating to the characteristics of the materials used.



## TRADITION Between past...

We have been working on the design of high-tech implant-prosthetic devices for over thirty years.



## INNOVATION

### ...and future

With the changeover from “analogue” to “digital” dentistry, our task is to make complex procedures simple and understandable.

Innovation while maintaining structural characteristics: this was the basis for our development of the ConEx™ conometric connection. An internal cone conicity 5° and at a depth of 1.7 mm provides optimal stability of prosthetic posts. The anti-rotational component is provided by the 2.3 mm hexagon included on Matrix implant lines has been a flagship element of our products for 30 years.

matrix™

# InthEx™ internal connection

- Double connection
- Anti-rotational
- Hexagon: depth 3 mm, width 2.3 mm
- Screw: length 7 mm, diameter 2 mm
- Large contact surface
- Optimal tolerance within 10 microns

- Greater retention of the abutment
- Discharge of tensions into the well
- Improved aesthetic appearance



The internal connection of MaTriX™ implants ensures greater flexibility in 360° positioning. In the surgical phase, the use of abutments for controlling the series 'P' parallel assignment, allows to define the exact position that the angled prosthetic abutment should have. The 3 mm depth of engagement of the internal implant-abutment interface gives the connection higher stability due to the large contact area. The 'double connection' at the coronal level increases the long term resistance of the structure. The design of MaTriX™ increases the implant strength and reduces the causes of mechanical stress because of the special geometry, which increases the stabilisation of the implant-abutment mating. The depth of the InthEx™ internal connection allows the head of the prosthetic screw to be placed in a more apical position compared to traditional connections. This allows a greater angle of preparation relative to the correction that the dental technician can make to the body of the abutment in the case of angled positioning of the implant fixture or for other prosthetic needs. As is well known, keeping the prosthetic screw head integral is essential in order to be able to perform preloading manoeuvres correctly. The use of the InthEx™ internal connection in combination with aesthetic implants which have been created for the maintenance of the crestal bone, allows maximum benefit from Platform Switching™ protocol, which is especially useful in cases of rehabilitation when trying to achieve maximum conservation of the bone and papillary structures in aesthetic areas.

All the components below may be used with the following types of MaTrix™ implants:



Type "R THUNDER"



Type "R"



Type "R Aesthetic"



Type "CF"



Type "C"



Type "Y Aesthetic"



Type "F"



Type "T"



Type "SL"

# Healing caps    Healing components



Short cap screw

Available diameters:

- Ø 3.3 mm
- Ø 3.8 mm
- Ø 4.5 mm
- Ø 5.2 mm
- Ø 5.9 mm



Straight healing cap, "PG\_D" series

Diameters and heights available:

- Ø 3.3 mm - H 2 - 5 mm
- Ø 3.8 mm - H 2 - 5 - 8 mm
- Ø 4.5 mm - H 2 - 5 mm
- Ø 5.2 mm - H 2 - 5 mm
- Ø 5.9 mm - H 2 - 5 mm



Flared healing cap, "PG\_S" series

• Diameters and heights available:

- Ø 3.3 mm - H 3 - 5 mm
- Ø 3.8 mm - H 3 - 5 mm
- Ø 4.5 mm - H 3 - 5 mm
- Ø 5.2 mm - H 3 - 5 mm
- Ø 5.9 mm - H 3 - 5 mm

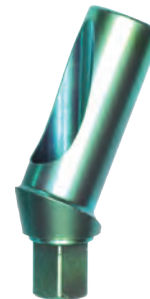
# Parallelism control abutments



Titanium anti-rotational parallelism control abutment at 0°, "P" series



Titanium anti-rotational parallelism control abutment at 15°, "P" series



Titanium anti-rotational parallelism control abutment at 25°, "P" series



# Transfers for impression



Standard transfer for impression, "TI" series

Available diameters:

- Ø 3.3 mm
- Ø 3.8 mm
- Ø 4.5 mm
- Ø 5.2 mm
- Ø 5.9 mm

closed tray impression technique



Retentive transfer for impression, "TK" series

Available diameters:

- Ø 3.3 mm
- Ø 3.8 mm
- Ø 4.5 mm
- Ø 5.2 mm



Flat retentive transfer for impression, "TKF" series

Available diameters:

- Ø 3.3 mm
- Ø 3.8 mm
- Ø 4.5 mm
- Ø 5.2 mm

Pick up technique



Tear-off transfer without screws

Available diameters:

- Ø 3.3 mm



Laboratory analogue for digital dentistry

Available diameters:

- Ø 3.3 mm
- Ø 3.8 mm
- Ø 4.5 mm
- Ø 5.2 mm
- Ø 5.9 mm



Laboratory analogue for type "R Thunder" implants

Available diameters:

- Ø 3.3 mm
- Ø 3.8 mm
- Ø 4.5 mm
- Ø 5.2 mm



Laboratory analogue

Available diameters:

- Ø 3.3 mm
- Ø 3.8 mm
- Ø 4.5 mm
- Ø 5.2 mm
- Ø 5.9 mm

# Cemented prosthesis



Titanium abutment "PT" series

Available diameters:

- Ø 3.3 mm
- Ø 3.8 mm
- Ø 4.5 mm
- Ø 5.2 mm



Acetyl milling abutment with titanium anti-rotation basis, "PA" series

Available diameters:

- Ø 3.3 mm
- Ø 3.8 mm
- Ø 4.5 mm
- Ø 5.2 mm



Straight abutment series "2D" and "5D"

Diameters and heights available:

- Ø 3.3 mm - H 2 - 5 mm
- Ø 3.8 mm - H 2 - 5 mm
- Ø 4.5 mm - H 2 - 5 mm
- Ø 5.2 mm - H 2 - 5 mm
- Ø 5.9 mm - H 2 - 5 mm



Straight abutment without shoulder "DD" series

Available diameters:

- Ø 3.3 mm
- Ø 3.8 mm
- Ø 4.5 mm
- Ø 5.2 mm



15° or 25° angled abutment series "15" and "25"

Diameters and heights available: \* :

- Ø 3.3 mm - H 2 - 5 mm
- Ø 3.8 mm - H 2 - 5 mm
- Ø 4.5 mm - H 2 - 5 mm
- Ø 5.2 mm - H 2 - 5 mm

\* Angled abutment 25° are only available in height 2 mm



15° angled abutment without shoulder "15D" series

Available diameters:

- Ø 3.3 mm
- Ø 3.8 mm

# Cemented prosthesis



Customable milling abutment,  
"PF" series

Available diameters:

- Ø 3.3 mm
- Ø 3.8 mm
- Ø 4.5 mm
- Ø 5.2 mm
- Ø 5.9 mm



Calcinable abutment, "CEI"  
series

Available diameters:

- Ø 3.3 mm
- Ø 3.8 mm
- Ø 4.5 mm
- Ø 5.2 mm
- Ø 5.9 mm



Milling calcinable abutment,  
"CFI" series

Available diameters:

- Ø 3.3 mm
- Ø 3.8 mm
- Ø 4.5 mm
- Ø 5.2 mm
- Ø 5.9 mm



Co.Cr.Mo. undercooling  
abutment, "UCLA C" series

Available diameters:

- Ø 3.3 mm
- Ø 3.8 mm
- Ø 4.5 mm
- Ø 5.2 mm

# For screw-retained prostheses for single elements



Titanium abutment for bonding, "PTI" series

Available diameters:

- Ø 3.3 mm
- Ø 3.8 mm
- Ø 4.5 mm
- Ø 5.2 mm



Calcifiable abutment, "CEI" series

Available diameters:

- Ø 3.3 mm
- Ø 3.8 mm
- Ø 4.5 mm
- Ø 5.2 mm
- Ø 5.9 mm



Milling calcifiable abutment, "CFI" series

Available diameters:

- Ø 3.3 mm
- Ø 3.8 mm
- Ø 4.5 mm
- Ø 5.2 mm
- Ø 5.9 mm



Co.Cr.Mo. undercooling abutment, "UCLA C" series

Available diameters:

- Ø 3.3 mm
- Ø 3.8 mm
- Ø 4.5 mm
- Ø 5.2 mm



"PTI" series abutment for bonding without shoulder

Available diameters:

- Ø 3.3 mm

# For screw-retained prostheses for multiple elements



Titanium rotational retentive abutment "KPTR" series

Available diameters:

- Ø 3.3 mm - H 13
- Ø 3.8 mm
- Ø 4.5 mm
- Ø 5.2 mm



Titanium internal flat abutment (Length: 9 or 12 mm), "PTR" series

Available diameters:

- Ø 3.3 mm
- Ø 3.8 mm
- Ø 4.5 mm
- Ø 5.2 mm



Titanium rotational abutment for bonding, "PTRI" series

Available diameters:

- Ø 3.3 mm
- Ø 3.8 mm
- Ø 4.5 mm
- Ø 5.2 mm



"PTRI" series rotational abutment for bonding without shoulder

Available diameters:

- Ø 3.3 mm



Internal back connection calcinable abutment, "CSI" series

Available diameters:

- Ø 3.3 mm
- Ø 3.8 mm
- Ø 4.5 mm
- Ø 5.2 mm
- Ø 5.9 mm

# For screw-retained prostheses for multiple elements



Angled conical abutment  
17° and 30°, "MC" series



Healing abutment for conical  
abutments "MC" series



Transfer for impression for angled  
conical abutments, "MC" series

Diameters and heights available:

- Ø 3.3 mm - H. 1 - 3 mm
- Ø 3.8 mm - H. 1 - 3 mm



Laboratory analogue for angled  
conical abutments, "MC" series



Titanium cape for angled conical  
abutments, "MC" series



Calcifiable cape for angled  
conical abutments, "MC" series

# For screw-retained prostheses for multiple elements



Flat conical abutment,  
"MCF" series



Healing Cap for flat conical  
abutments "MCF" series



Transfer for impression for flat conical  
abutments "MCF" series

Diameters and heights available:

- $\varnothing$  3.3 mm - H. 2 - 4 mm
- $\varnothing$  3.8 mm - H. 2 - 4 mm
- $\varnothing$  4.5 mm - H. 2 - 4 mm
- $\varnothing$  5.2 mm - H. 2 - 4 mm



Laboratory analogue for flat  
conical abutments,  
"MCF" series



Titanium cape  
for flat conical abutments,  
"MCF" series



Calcinable cape  
for flat conical abutments,  
"MCF" series

# Removable prosthesis



Ball attachment  $\varnothing$  2,1 mm,  
"21AS" series

Diameters and heights available:

- $\varnothing$  3.3 mm - H. 1 - 3 - 4 - 5 mm
- $\varnothing$  3.8 mm - H. 1 - 3 mm
- $\varnothing$  4.5 mm - H. 1 - 3 mm



Box external  $\varnothing$  2.1 mm  
for ball attachment  
Provided with o-ring

Available diameters:

- $\varnothing$  external 5 mm
- $\varnothing$  external 4 mm



O-ring for ball attachment for  
 $\varnothing$  2.1

Available diameters:

- $\varnothing$  external 5 mm
- $\varnothing$  external 5 mm special
- $\varnothing$  external 4 mm



Ball attachment  
 $\varnothing$  1,8 mm, "18AS" series

Diameters and heights available:

- $\varnothing$  3.3 mm - H. 1 - 2 - 3 mm
- $\varnothing$  3.8 mm - H. 1 - 2 - 3 mm
- $\varnothing$  4.5 mm - H. 1 - 2 - 3 mm



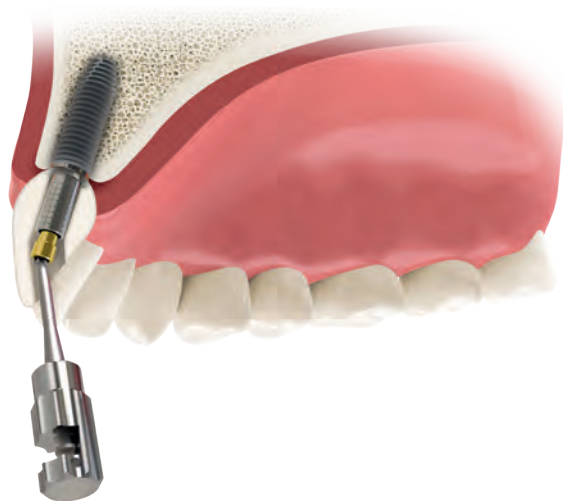
Accessories for ball attachment  
"18AS" series:

- n. 1 stainless steel housing - micro
- n. 2 pink caps - soft retention - micro
- n. 1 protective disk



# MES<sup>®</sup> (Matrix<sup>®</sup> Easy Screw)

MES<sup>®</sup> is a "system" produced by BioService that consists of a ball wrench with a contra-angle attachment a manual handle and a dedicated prosthetic screw that allows the angled access of the screw in special aesthetic and functional conditions, in the realization of screwed dental prosthesis. Thanks to this system, it is possible to solve the problems related to a non-optimal positioning of the access hole, both in the anterior anterior (e.g. vestibular areas) and posterior areas.



## MES<sup>®</sup> Kit for InthEx Connection



n.8 Prosthetic screws for angled canal



n.1 Contrangle key for angled canal MES



n.1 Manual handling for contrangle key for angled canal MES

# For syncrystalized / welded prostheses



Welding titanium retentive abutment, "KPTR\_SA" series (also for short implant)



Welding titanium internal flat abutment, "SPTR" series (Length: 9 - 12 mm | also for short implant)



Welding titanium cape "\_SA" series, for flat conical abutments, "MCF" series



Titanium rods for welding  
Available diameters:  
• Ø 1 - 1.5 - 2 mm



CMFT SA titanium cape for flat conical abutment, "EMCF" series



CMFT SA45 titanium cape (tilted by 45°) for flat conical abutment, "EMCF" series



Welding cap angled 45° in titanium for implants"

Diameters and heights available:  
• Ø 3.3 mm - H. 1 - 3 mm



Welding Cap straight in titanium for implants"

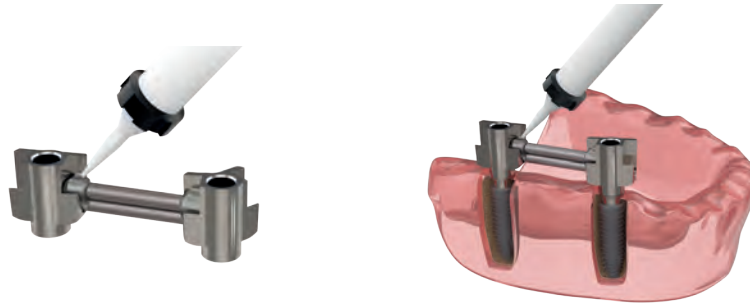
Diameters and heights available:  
• Ø 3.3 mm - H. 1 - 3 mm

# For syncrystalized / welded prostheses

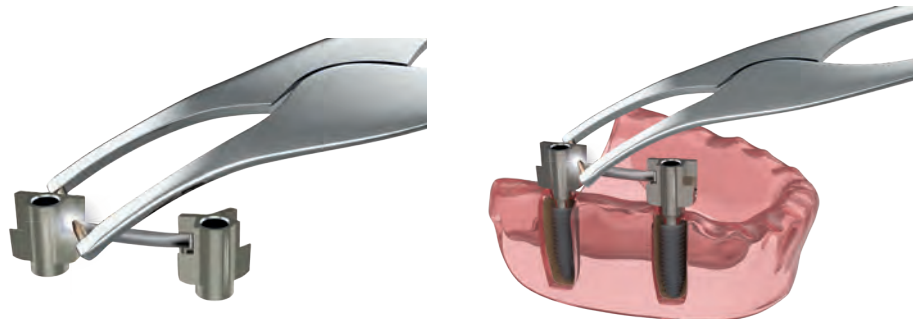
**FICS™** | FIXING  
INTRAORAL  
CONTINUING  
SOLDERING

**FICS™** is a BioService patent that allows you to rigidly fix different implants among them by using pre-formed titanium rods, with bonding or welding technique (direct or not direct).

Bonding



Welding



## **FICS™ Kit for inthEx connection**

It is available a kit that includes:

n.2 Titanium rods  $\varnothing$  1.5 mm and length 150 mm

n.2 Titanium rods  $\varnothing$  2 mm and length 150 mm

n.3 FICS CMFT SA capes (prosthetic screws included)

n.3 FICS CMFT SA45 capes (prosthetic screws included)

# Prosthetic screws



Prosthetic screw for transfer for impression series "12 VT\_"

- short
- long



Manual prosthetic screw for transfer for impression "12 VTM"



Prosthetic screw 16 VPC\_" series

- short
- long



Prosthetic screw for angled channel "18 VPC\_" series

# Components for digital dentistry



Intraoral scan body



Intraoral scan body for flat conical abutments "MCF" series



Intraoral scan body for flat conical abutments "MC" series



Laboratory scan abutment



Laboratory scan abutment for flat conical abutments "MCF" series



Laboratory scan abutment for flat conical abutments "MC" series



Intraoral scan body and laboratory for "PTI" series abutments



Intraoral scan body and laboratory for conical abutments series "MC"

# Components for digital dentistry



Titanium antirotational straight abutment, "TB" series

Diameters and heights available:

- Ø 3.3 mm - H 1 - 3 mm
- Ø 3.8 mm - H 1 - 3 mm
- Ø 4.5 mm - H 1 - 3 mm



Titanium rotational straight abutment, "TB" series

Diameters and heights available:

- Ø 3.3 mm - H 1 - 3 mm
- Ø 3.8 mm - H 1 - 3 mm
- Ø 4.5 mm - H 1 - 3 mm



Calcifiable antirotational cape for abutments for digital dentistry, "TB" series



Titanium abutment for bonding, "PTI" series

Available diameters:

- Ø 3.3 mm
- Ø 3.8 mm
- Ø 4.5 mm
- Ø 5.2 mm



Rotational abutment for bonding "PTRI" series

Available diameters:

- Ø 3.3 mm
- Ø 3.8 mm
- Ø 4.5 mm
- Ø 5.2 mm



Internal hexagon connector external torque

# Components for digital dentistry



Flat conical abutment,  
"MCF" series

- Diameters and heights available:
- $\varnothing$  3.3 mm - H 2 - 4 mm
- $\varnothing$  3.8 mm - H 2 - 4 mm
- $\varnothing$  4.5 mm - H 2 - 4 mm
- $\varnothing$  5.2 mm - H 2 - 4 mm



Healing cap for flat conical abutments,  
"MCF" series



Straight conical abutment  
and inclined 17° and  
30°.

- Diameters and heights available:
- $\varnothing$  3.3 mm - H 1 - 3 mm
- $\varnothing$  3.8 mm - H 1 - 3 mm



Cap for conical abutments  
"MC" series

# Inthex™ connection for short implants



- Double connection
- Anti-rotational
- Hexagon: depth 3 mm, width 2.3 mm
- Screw: length 7 mm, diameter 2 mm
- Large contact surface
- Optimal tolerance within 10 microns

- Greater retention of the abutment
- Discharge of tensions into the well
- Improved aesthetic appearance
- Taking the imprint of multiple implants is easier

InthEx™ hexagonal internal connection of the short type implants has the same features and advantages proposed for the other types of MaTriX™ implants. Although the same type of InthEx™ connection is present, it has been modified (regarding size) to facilitate the short lengths of Short implants; for this reason, the “S” type implants have their own components.



## Screw cap

## Healing components



Screw cap

Available diameters:

- Ø 3.3 mm
- Ø 3.8 mm



Straight or flared healing cap for short implants, "PGS2D" and "PGS3S" series

Available diameters:

- Ø 3.3 mm
- Ø 3.8 mm

## Transfers for impression



Retentive transfer for impression for short implants, "TKS" and "TKS 7" series

Available diameters:

- Ø 3.3 mm
- Ø 3.8 mm



Laboratory analogue for digital dentistry

Available diameters:

- Ø 3.3 mm
- Ø 3.8 mm



Laboratory analogue

Available diameters:

- Ø 3.3 mm
- Ø 3.8 mm

## Screw-retained prostheses with single elements



Calcineable abutment for short implants, "CEIS" and "CEIS 7" series

Available diameters:

- Ø 3.3 mm
- Ø 3.8 mm



Co.Cr.M.o. undercooling abutment short series "UCLA C S7"

Available diameters:

- Ø 3.3 mm
- Ø 3.8 mm

## Screw-retained prostheses with multiple elements



Titanium rotational retentive abutment for short implants, "KPTRS" and "KPTRS 7" series

Available diameters:

- Ø 3.3 mm
- Ø 3.8 mm



Flat titanium internal abutment for short implant series "PTRS" and "PTRS7"

Diameters and heights available:

- Ø 3.3 mm - L 9 - 12 mm
- Ø 3.8 mm - L 9 - 12 mm



Internal back connection calcineable abutment for short implants, "CSIS" and "CSIS 7" series

Available diameters:

- Ø 3.3 mm
- Ø 3.8 mm

# For cemented prosthesis



Straight abutment for short implants, "2DS" and "2DS7" series

Available diameters:

- Ø 3.3 mm
- Ø 3.8 mm



Customable milling abutment for short implants, "PFS" and "PFS 7" series

Available diameters:

- Ø 3.3 mm
- Ø 3.8 mm



Welding titanium internal flat abutment for short implants, "SPTRS" and "SPTRS 7" series

Diameters and heights available:

- Ø 3.3 mm - L 9 - 12 mm
- Ø 3.8 mm - L 9 - 12 mm



Long screw for transfer Short

Short screw for short abutments

# InthEx™ connection for short implants

- Excellent primary stability
- Reduction of bone trauma due to the double-step turns



## **The MINI implant can be used:**

- as a provisional implant when it is desired to apply fixed or removable provisional fixed or removable temporaries, while waiting for the standard implants to osseointegrate;
- as a definitive implant when space is limited;
- when an economic solution is required to stabilise an existing prosthesis;
- when bone crests are thin and one does not want to proceed with additive surgery techniques

# Prosthetic components for MINI implants



Transfer for  
impression for conical  
MINI implants R - abutment  
H.2 - ball  
Ø 2.1 - 1.8 mm



Analogue for conical  
MINI implants R -  
abutment H.2 -  
ball Ø 2.1 - 1.8 mm



Calcifiable cape  
for conical MINI implants  
R - abutment H.2 -  
ball Ø 2.1 - 1.8 mm



Accessories for MINI implants Ø<sup>s</sup>  
1.8 mm

- stainless steel housing - micro
- pink caps - soft retention - micro
- protective disk



Box external for MINI implants  
Ø<sup>s</sup> 2.1 provided with o-ring.  
Available diameters:

- Ø external 4 mm
- Ø external 5 mm



O-ring for Mini implants Ø<sup>s</sup> 2.1  
mm

Available diameters:

- Ø external 4 mm
- Ø external 5 mm
- Ø external 5 mm special

# NOTES:

---

---

---

---

---

---

---

---

---

---

---

---

---

---

---

---

---

---

---

---

---

---

---

---

---

---

## NOTES:

---

---

---

---

---

---

---

---

---

---

---

---

---

---

---

---

---

---

---

---

---

---

---



Via Leonardo da Vinci, 185/F  
45021 Badia Polesine (RO)  
tel. +39 0425.82961 - fax +39 0425.847920  
[www.bioservicesrl.it](http://www.bioservicesrl.it) - [info@bioservicesrl.eu](mailto:info@bioservicesrl.eu)

Product



Rev. 02/2021



Linea implantare MaTriX

| [www.bioservicesrl.it](http://www.bioservicesrl.it)

Ref. BMCP  
Rev. 02 del 07/2021-EN